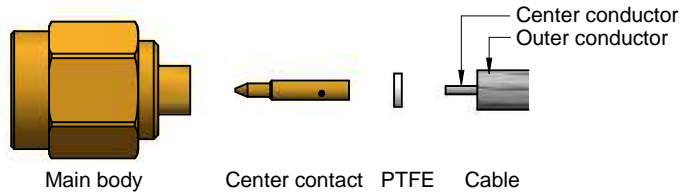
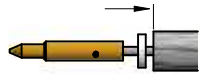


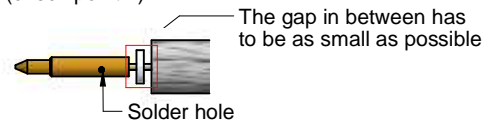
**Step 1.** Prepare connector components and strip coaxial cable according to given dimensions (check point 1)



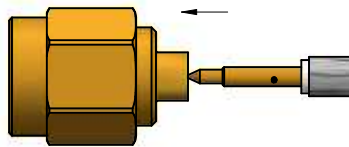
**Step 2.** Slide PTFE and center contact up to outer conductor



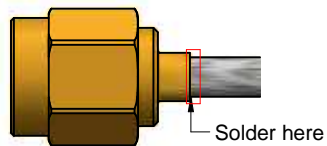
**Step 3.** Solder cable center conductor using minimum amount of solder paste through solder hole (check point 2)



**Step 4.** Push cable with center contact into connector main body until perceptive point (check point 3)



**Step 5.** Solder connector main body to outer conductor (check point 4)

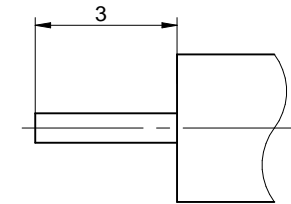


**Assembly Method :**

Center contact : Soldered  
Outer contact : Soldered

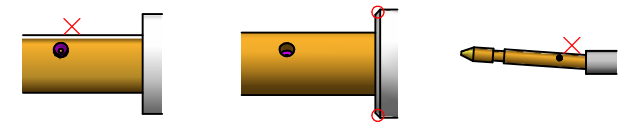
**Cable Type :** Hand formable RG405/.085"

**Cable Strip Dimensions (mm) :**



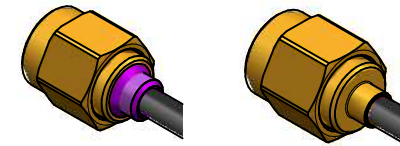
**Check Point :**

1. No components damage and no cable splits after stripping
2. No excess solder, melt dielectric, and misaligned center contact after assembling



3. Avoid damage cable when pushing into connector body  
Use gauge kit to check interface if necessary

4. No excess or lack solder flow



Würth Elektronik eiSos GmbH & Co. KG  
EMC & Inductive Solutions

Max-Eyth-Str. 1  
74638 Waldenburg  
Germany  
com. +49 79 42 945 - 0

www.we-online.de  
eiSos@we-online.de



CREATED  
BMa

CHECKED  
JCh

DESCRIPTION

**Assembly instructions**

**603 490 212 108 20**

REVISION

STATUS

DATE

2019-08-01

BUSINESS UNIT

eiCan